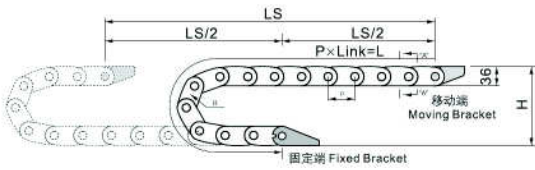


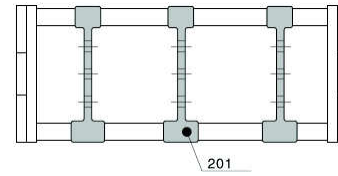
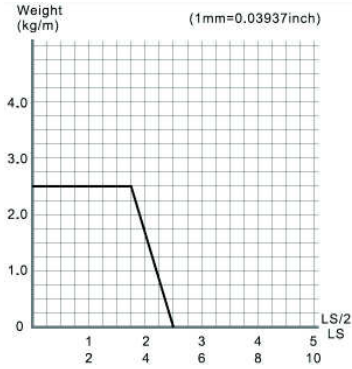
K3500/3550 series Installation Dimensions & Tech Data

Length calculation

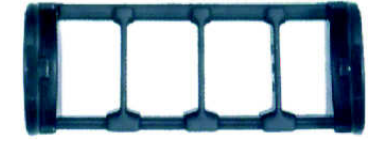
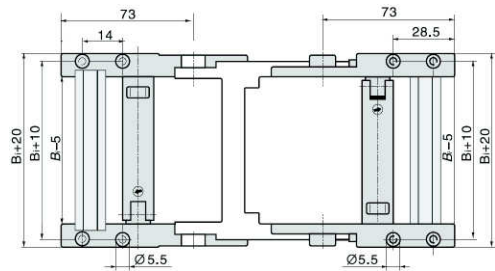


$$L = \frac{LS}{2} + \pi \times R + 224$$

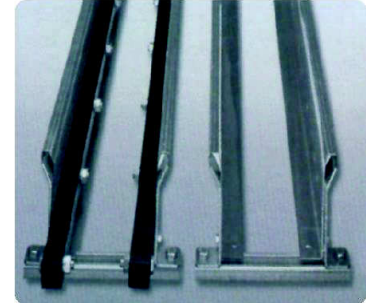
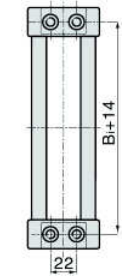
L: Length
 R: bending Radius
 H: Installation Height
 P: Pitch
 224: Safety Length



Fixed bracket

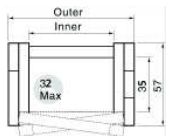


Moving bracket



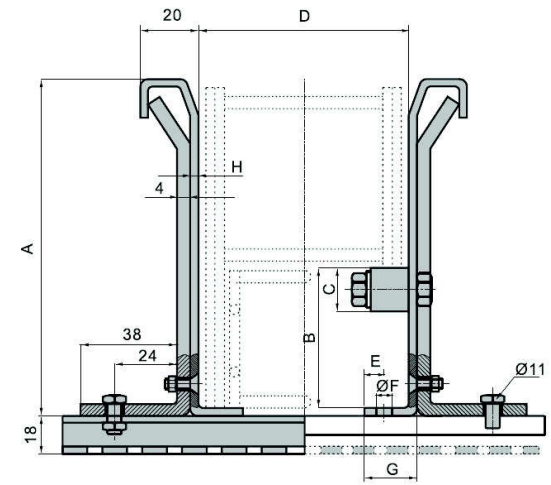
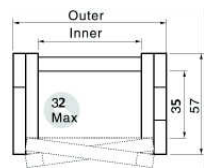
K3500 series can be open by both side

Type	Inner width (mm)	Outer width (mm)	Bending radius(mm)	Pitch (mm)	Weight (kg)
3500.050.□.0	50	75	75 100 125 150 200	56	2.20
3500.075.□.0	75	100	75 100 125 150 200	56	2.50
3500.100.□.0	100	125	75 100 125 150 200	56	2.60
3500.125.□.0	125	150	75 100 125 150 200	56	2.70
3500.150.□.0	150	175	75 100 125 150 200	56	2.90
3500.175.□.0	175	200	75 100 125 150 200	56	3.00
3500.200.□.0	200	225	75 100 125 150 200	56	3.10
3500.250.□.0	250	275	75 100 125 150 200	56	3.20



K3550 series can be open by both side

Type	Inner width (mm)	Outer width (mm)	Bending radius(mm)	Pitch (mm)	Weight (kg)
3550.050.□.0	50	75	75 100 125 150 200	56	2.40
3550.075.□.0	75	100	75 100 125 150 200	56	2.70
3550.100.□.0	100	125	75 100 125 150 200	56	2.90
3550.125.□.0	125	150	75 100 125 150 200	56	3.00



Cable tray without slide strip	1
Cable tray with slide strip	2
A	70
B	34
C	20
D	*
E	12
F	9
G	26
H	2