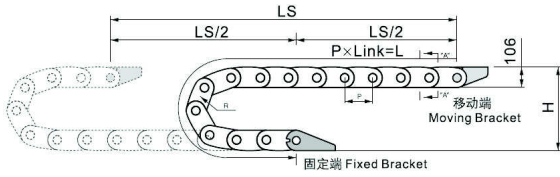


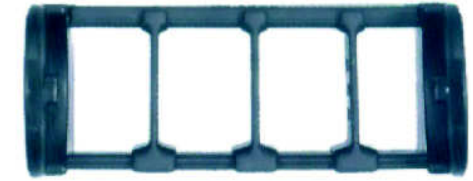
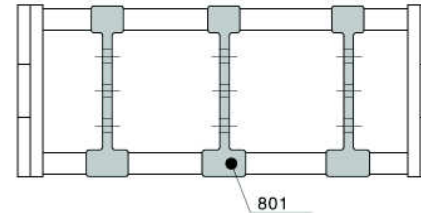
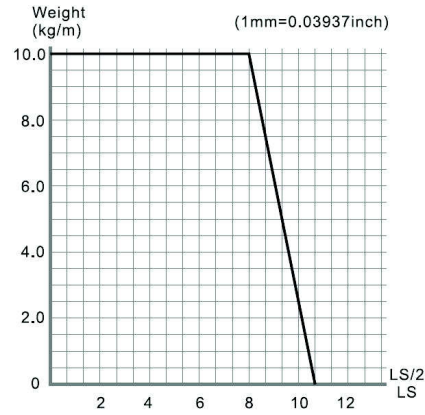
K8000/8050 series Installation Dimensions & Tech Data

Length calculation

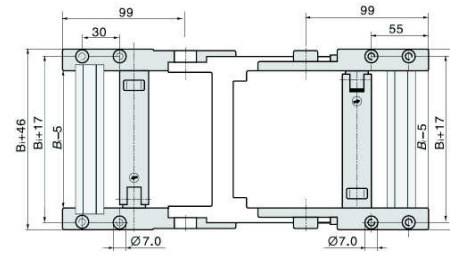


$$L = \frac{LS}{2} + \pi \times R + 364$$

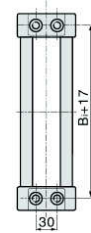
L: Length
R: bending Radius
H: Installation Height
P: Pitch
364: Safety Length



Fixed bracket

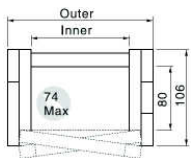


Moving bracket



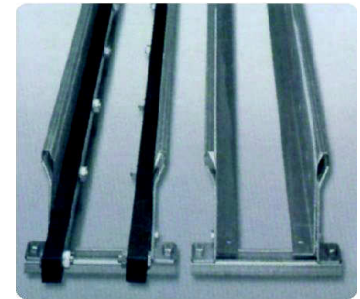
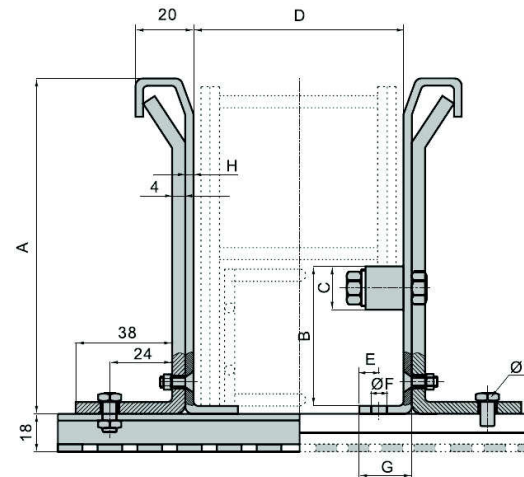
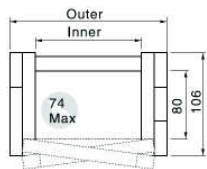
K8000 series can be open by both side

Type	Inner width (mm)	Outer width (mm)	Bending radius(mm)	Pitch (mm)	Weight (kg)
8000.100.□.0	100	155	150 200 250 300 350	91	4.50
8000.125.□.0	125	180	150 200 250 300 350	91	4.70
8000.150.□.0	150	205	150 200 250 300 350	91	4.90
8000.175.□.0	175	230	150 200 250 300 350	91	5.10
8000.200.□.0	200	255	150 200 250 300 350	91	5.30
8000.250.□.0	250	305	150 200 250 300 350	91	5.50
8000.300.□.0	300	355	150 200 250 300 350	91	5.70
8000.350.□.0	350	405	150 200 250 300 350	91	5.90
8000.400.□.0	400	455	150 200 250 300 350	91	6.10



K8050 series can be open by both side

Type	Inner width (mm)	Outer width (mm)	Bending radius(mm)	Pitch (mm)	Weight (kg)
8050.100.□.0	100	155	150 200 250 300 350	91	5.70
8050.125.□.0	125	180	150 200 250 300 350	91	6.00
8050.150.□.0	150	205	150 200 250 300 350	91	6.30



Cable tray without slide strip	1
Cable tray with slide strip	2
A	220
B	108
C	30
D	*
E	20
F	14
G	50
H	2.5